

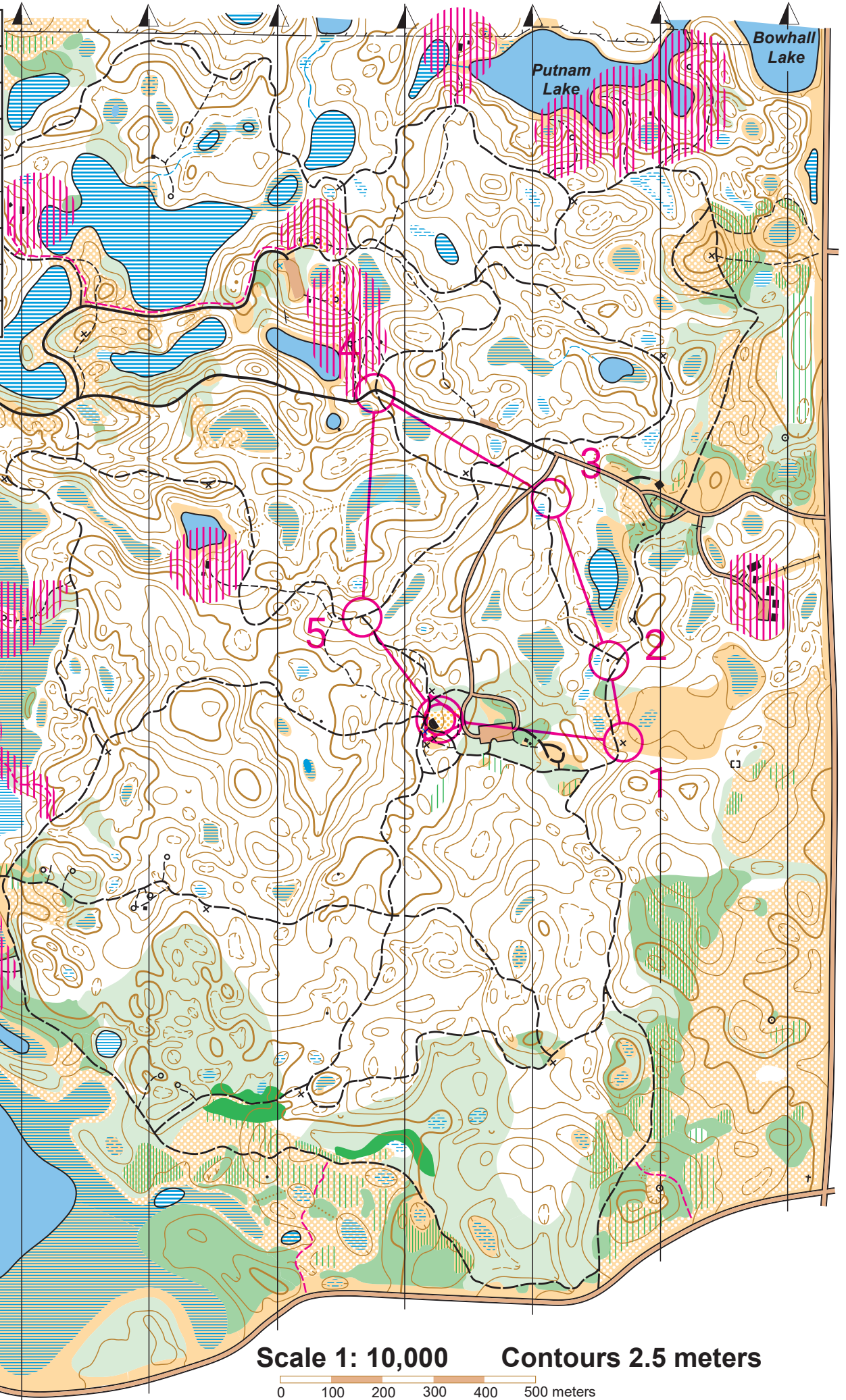


White

Lake Maria State Park

STAY OUT OF OUT OF BOUND AREAS

lake maria 2019					
White	2.0 km				
△					Start:
1	218	×			Special item
2	216	•			Knoll
3	215	— / —		<	Bend in path
4	220	— / —	×		Path and road crossing
5	228	— / —	Y		Path junction
⊗	250 m		⊗		Navigate 250 m to finish



Legend

- paved road, parking area
- dirt road
- vehicle track
- wide footpath, horse trail
- small footpath, winter trail
- indistinct footpath
- power line
- fence
- ruined fence
- building, small building, ruin
- man-made features, camp site
- passable rock face
- boulder
- grave
- lake, pond
- marsh, uncrossable marsh
- seasonal marsh
- intermittent stream
- small watercourse, footbridge
- drinking water
- open land with scattered trees
- rough open land/prairie
- rough open land with scattered trees
- open land
- forest: slow running
- forest: difficult to run
- undergrowth: difficult to run
- vegetation: difficult to walk
- vegetation boundary
- earth bank, pit
- small erosion gully, erosion gully
- broken ground
- knoll, small knoll
- depression, small depression
- contour
- index contour
- form line, slope tag
- out-of-bounds
- winter snow shoe route

Scale 1: 10,000

Contours 2.5 meters

0 100 200 300 400 500 meters

Base map: Minnesota Orienteering Club, 1991
 Field survey: Plamen Djambazov, May 2000
 Cartography: Plamen Djambazov
 Ian Harding 2019

©2019 Minnesota Orienteering Club
 For more information on the sport of orienteering,
 please see the MNOC web site <http://www.mnoc.org>

Please stay out of the remote campsites and cabins areas and their access trails marked by